

Specifications:

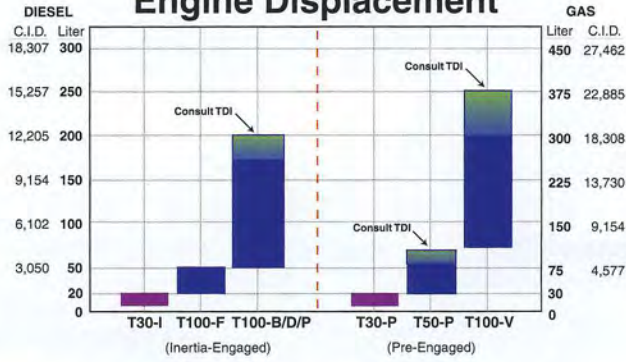
T100-F TURBOTWIN™ Engine Air Starters

An Economical
Configuration of
T100 for Medium-
Range Engines
from 20–50 Liters



TDI's state-of-the-art manufacturing facility produces some of the world's most sophisticated turbine/compressor designs.

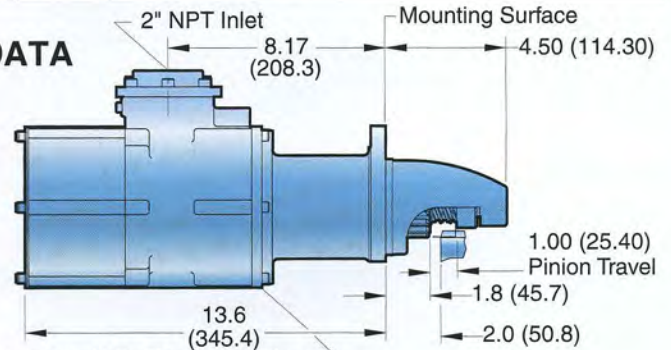
Starter Selection Chart Engine Displacement



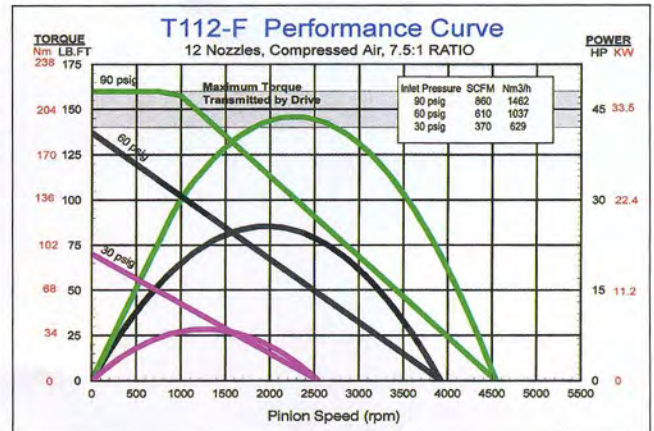
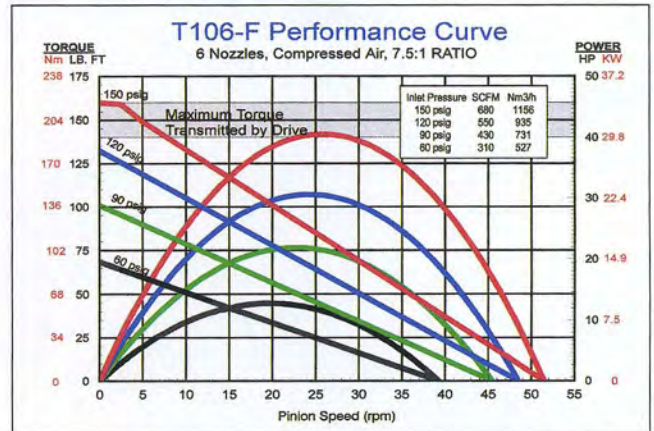
Consult your TDI Distributor and the TDI Selection Guide before choosing a TDI TURBOTWIN starter for any application.

This selection chart shows basic starter capability by engine size. Note the chart shows four-stroke diesel engine size on the left and four-stroke, spark-ignited engine sizes on the right. Always consult TDI for application-specific capability.

DIMENSIONAL DATA TDI TURBOTWIN T106-F/T112-F



Motor may be rotated to (12) different positions relative to drive opening for best inlet port location



SPECIFICATIONS

Engines:	Starts Engines up to 50 Liters (3000 CID)	Rotation:	(Facing Pinion Orientation) Righthand/clockwise and Lefthand/counter clockwise
Design Configuration:	Inline; Inertia-Engaged	Air/Gas Supply:	Compressed Air or Natural Gas
Common Pinion Configuration:	6/8 Pitch, 12 Tooth (2 inch pitch diameter pinion)	Lubrication:	Grease-Packed For Life, None Required
Mounting:	SAE 3 Flange, Standard	Gear Ratio:	7.5:1
Horsepower:		Custom:	Other models and configurations available. Consult your local TDI distributor.
T106-F:	44 hp (33 kW) Max. at 150 psig (10.3 BAR)		
T112-F:	44 hp (33 kW) Max. at 90 psig (6.2 BAR)		
Weight:	42 lbs. (19 kg)		
Operating Pressure Range:			

MODEL	NOZZLES	PSI	BAR
T106-F	6	60 - 150	4.1 - 10.3
T112-F	12	30 - 90	2 - 6.2

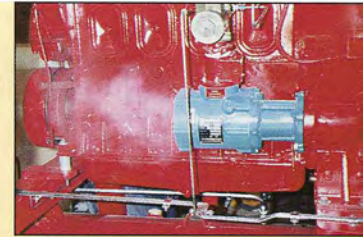
For applications in the 60-90 psig (4.1-6.2 BAR) range, consult your TDI distributor for best nozzle configuration.

T100-F's grease-packed for life feature eliminates wear, reduces maintenance, and delivers a significantly longer starting life.



T100-F responsiveness and reliability make sure you're on-line moving gas immediately.

T100-F Provides Big Cranking Power in a Small Package



This T100-F, mounted on a Detroit Diesel fire pump gas engine, provides the extended 180-second cranking cycle required by the U.S. Coast Guard.

FOR ENGINE COMPATIBILITY AND STARTER REPLACEMENT INFORMATION, SEE TABLE ON PAGE 23 OR CONSULT YOUR TDI DISTRIBUTOR.



The large channels of TDI turbine blades create an open air path that allows contaminants to pass through rather than get lodged in the starter and cause breakdowns.